

15. Fire & Safety Equipment

Water Extinguishers

A range of quality water extinguishers ideally suited for class A fires involving freely combustible solids containing materials such as paper, wood, straw, textiles etc..

- 45-1001W6 6ltr Cartridge Operated Water Extinguisher 11.4Kg Fire Rating 13A
- 45-1001W9 9ltr Cartridge Operated Water Extinguisher 15.5Kg Fire Rating 13A



AFFFoam Extinguishers

AFFFoam stored pressure extinguishers are ideal for class A & B fires where volatile liquids such as petrol, oil, fats and paints are involved

- 45-1002F2 2ltr AFFFoam Cartridge Operated Extinguisher 3.1Kg Fire Rating 13A & 183B
- 45-1002F6 6ltr AFFFoam Cartridge Operated Extinguisher 11.1Kg Fire Rating 13A & 183B
- 45-1002F9 9ltr AFFFoam Cartridge Operated Extinguisher 15.4Kg Fire Rating 13A & 183B



Powder Extinguishers

A range of stored pressure powder extinguishers suitable for fighting class A, B & C fires.

- 45-1003P2 2kg Stored Pressure Powder Extinguisher Charge Weight 3.0Kg Fire Rating 8A & 70B
- 45-1003P6 6kg Stored Pressure Powder Extinguisher Charge Weight 9.9Kg Fire Rating 34A & 133B
- 45-1003P9 9kg Stored Pressure Powder Extinguisher Charge Weight 14Kg Fire Rating 43A & 233B



CO2 Extinguishers

A range of CO2 extinguishers highly effective against fires involving electrical equipment such as computers, photocopiers, generators etc.. CO2 is a clean extinguishant causing limited secondary damage.

- 45-1004CO2 5kg CO2 Extinguisher Charge Weight 10.76Kg, Fire Rating 55B
- 45-1004CO5 2kg CO2 Extinguisher Charge Weight 5.32Kg, Fire Rating 34B



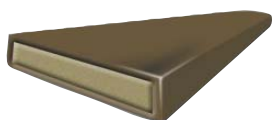
Fire Blankets Tamper evident, front loading, keyhole or multi-point fix. Guaranteed for 10 years, unique heavyweight cloth. BSEN869:1997 Kite Mark Certified, B.A.F.E approved.

- 45-1009 1m x 1m
- 45-1009 1.2m x 1.2m
- 45-1009 1.6m x 1.6m

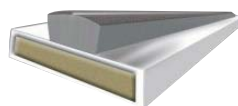


Fire & Smoke Door Intumescent Seals

½ hr fire rating. Extensively tested to BS476 parts 22 & 23/6. Manufactured under BS EN ISO 9002. High performance Graphite Core. Unaffected by moisture, humidity or atmospheric pollution. Rapid multi-directional expansion.



Fire & Plain



Fire & Smoke

- 45-2000 45-2010
- 45-2020 45-2030
- 45-2040 45-2050

